

ROOM FINISH SCHEDULE

GROUND FLOOR		FLOOR	FINISH	BASE	FINISH	WALLS	FINISH	CEILING	FINISH	HEIGHT	REMARKS
No.	ROOM NAME										
100											
101	S/A STATION	CONCRETE	PT	TILE		GYP.BD/GL	PAINT	ACT	PREFIN	3050	FLUSH TILE BASE DETAIL
102	S/A / BDC	CONCRETE	PT	TILE		GYP.BD/GL	PAINT	ACT	PREFIN	3050	FLUSH TILE BASE DETAIL
103	ASSIST. MANAGER	CONCRETE	PT	TILE		GYP.BD/GL	PAINT	ACT	PREFIN	3050	FLUSH TILE BASE DETAIL
104	FIXED OPERATIONS	CONCRETE	PT	TILE		GYP.BD/GL	PAINT	ACT	PREFIN	3050	FLUSH TILE BASE DETAIL
105	TOWER OPERATION	CONCRETE	PT	TILE		GYP.BD/GL	PAINT	ACT	PREFIN	3050	FLUSH TILE BASE DETAIL
106	CORRIDOR	CONCRETE	PT	TILE		GYP.BD/GL	PAINT	ACT	PREFIN	3050	FLUSH TILE BASE DETAIL
107	WARRANTY ADMIN	CONCRETE	PT	TILE		GYP.BD/GL	PAINT	ACT	PREFIN	3050	FLUSH TILE BASE DETAIL
108	SERVICE MANAGER	CONCRETE	PT	TILE		GYP.BD/GL	PAINT	ACT	PREFIN	3050	
109											
110											
111	SERVICE DRIVE	CONCRETE	PT	TILE				EXPOSED	PAINT		TILE UPSTAND CURB, REFER TO GENERAL NOTE RE:PAINT CEILINGS
112											

PT-1 OLYMPIA TILE
TYPE 1 – FLOOR COVERING BASIC MID GREY
SIZE: 30X60CM
SPECIFICATIONS:
• OLYMPIA TILE
• MARAZZI TECNICA, SISTEMN
• MZ.SN.GFN.1224.MT
• NEUTRO GRAFITE, MATTE
• 1/3 OFFSET PATTERN
• GROUT MAPEI #47, CHARCOAL

PT-2 OLYMPIA TILE
TYPE 2 – FLOOR COVERING PRESENTATION DARK GREY
SIZE: 60X120CM
SPECIFICATIONS:
• OLYMPIA TILE
• MARAZZI TECNICA, SISTEMN
• MZ.SN.NNO.2448.MT
• NEUTRO NERO, MATTE
• 1/3 OFFSET PATTERN
• GROUT MAPEI #10, BLACK

PT-3 OLYMPIA TILE
TYPE 3 – FLOOR COVERING WOOD LOOK
SIZE: 10X70CM
SPECIFICATIONS:
• OLYMPIA TILE
• TREVERKFUSION SERIES
• MZ.TF.NTR.0428
• NEUTRAL BIEGE
• GROUT MAPEI #108, BAMBOO

HARDWARE GROUPS

HG-1

- 1 ROTON HINGE
1 CLOSER (HEAVY DUTY)
1 PUSH (1" DIA.)
1 PULL (1" DIA.)
1 DEAD BOLT
1 THRESHOLD
1 WEATHER-STRIP KIT

HG-2

- 1 AUTO SLIDING DOOR
OPERATING SYSTEM
2 MOTION SENSORS, EA. SIDE
2 EMERGENCY BREAKAWAY PANELS

HG-3

- 1 OVERHEAD DOOR OPERATOR
c/w CONTROLS & SENSORS
1 SAFETY DOOR BOTTOM
1 WEATHER-STRIP KIT

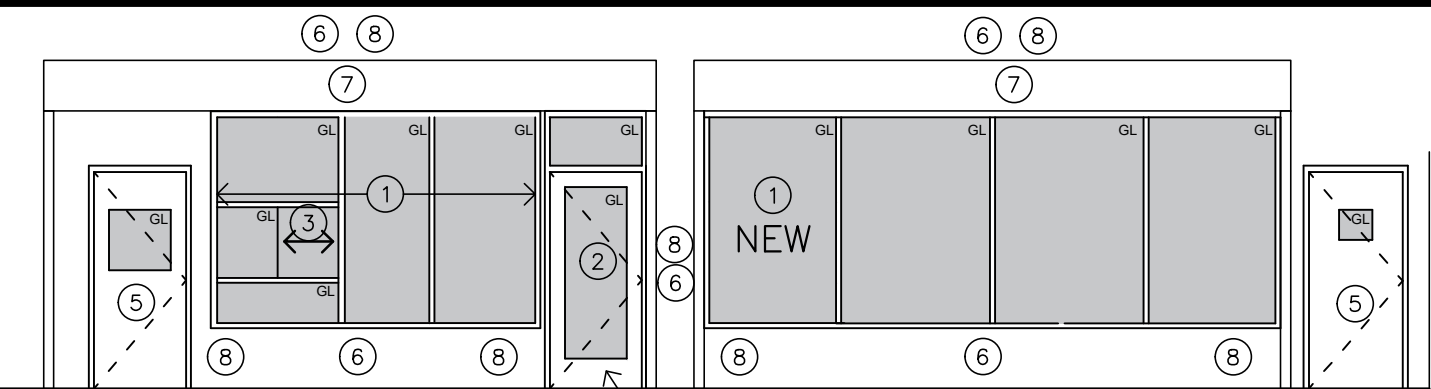
HG-4

- 2 PIVOT HINGES
1 CLOSER C/W HOLD OPEN DEVICE
1 LOCK SET (LEVER STYLE)
1 DOOR STOP

HG-5

- SLIDING GLASS DOOR TRACK
2 PULLS
1 DEADLOCK

GENERAL NOTES:
ALL HARDWARE TO HAVE BRUSHED CHROME FINISH.
ALL TO BE LEVER STYLE HARDWARE.
ALL HARDWARE TO BE COMMERCIAL GRADE.
ALL EXTERIOR DOORS TO HAVE THRESHOLD
ALL EXTERIOR DOORS TO HAVE WEATHER-STRIPPING
ALL FIRERATED DOORS TO HAVE SMOKE SEAL



- 1

REMOVE EXISTING WINDOW FRAMING & GLASS
- 2

SUPPLY AND INSTALL NEW ALUM. DOOR AND FRAME
- 3

SUPPLY AND INSTALL NEW SLIDING GLASS WINDOW IN ALUM. FRAME
- 4

REMOVE EXISTING WALL AS REQUIRED TO INSTALL NEW DOOR, PATCH AND MAKE GOOD
- 5

EXISTNG DOOR & FRAME TO REMAIN,REPAINT
- 6

EXISTNG WALL TO REMAIN,REPAINT
- 7

EXISTNG FIRE SHUTTER & TRACK TO REMAIN
- 8

PATCH & GOOD ALL SURFACES AS REQUIRED

1

INTERIOR SHOP ELEVATION

A901

SCALE 1:75

2	07 OCT. '25	ISSUED FOR ADDENDUM NO.5
1	02 OCT. '25	ISSUED FOR ADDENDUM NO.3
no.	date	revision

brian k. clark ARCHITECT	project	 Mercedes-Benz Star Motors of Ottawa 400 West Hunt Club Rd, Ottawa, Ontario	scale:	date:	dwg. no.
	drawing		AS NOTED	30 SEPT. '25	
		ROOM FINISH SCHEDULE INTERIOR ELEVATION	drawn by:	proj. no.	A901
			DP	2302	